

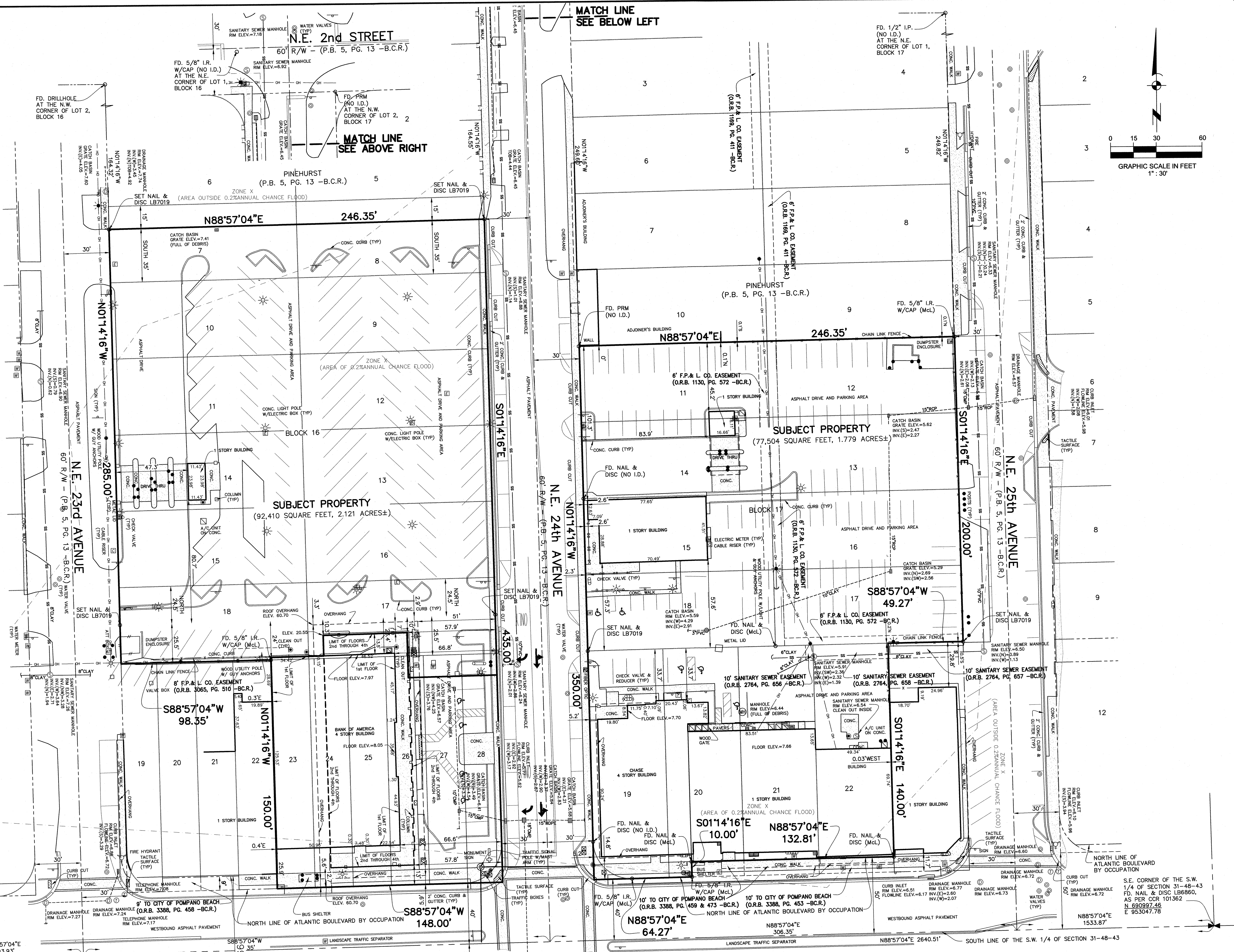
KEY TO ABBREVIATIONS

ALTA = American Land Title Association
B.C.R. = Broward County Public Records
C = Centerline
CCR = Certified Corner Record
CMP = Corrugated Metal Pipe
(D) = Per Record Deed
I.D. = Identification
INV. = Invert
R = Radius
Δ = Central Angle
L = Arc Length
FD. = Found
HDPE = High Density Polyethylene
I.P. = Iron Pipe
I.R. = Iron Rod
LB = Licensed Business
NSPS = National Society of Professional Surveyors
(McL) = McLaughlin Engineering
MP = Metal Pipe
O.R.B. = Official Records Book
(P) = Per Record Plat
P.B. = Plat Book
PG. = Page
PVC = Polyvinyl Chloride
PRM = Permanent Reference Monument
PSM = Professional Surveyor & Mapper
RCP = Reinforced Concrete Pipe
R/W = Right-of-Way
(S) = As Surveyed in the field
TOB = Top of Baffle
TYP. = Typical
W/ = With

SYMBOLS LEGEND

Air Conditioner
 AT&T Box
 Cable Riser
 Catch Basin
 Check Valve
 Clean Out
 Concrete Light Pole
 Drainage Manhole
 Electric Box
 Electric Meter
 Existing Elevation
 Fiber Optic
 Fire Hydrant
 Guy Anchor
 Irrigation Valve
 Manhole
 Metal Light Pole
 Pedestrian Signal Pole
 Post
 Reducer
 Sanitary Sewer Manhole
 Sign
 Tactile Surface
 Telephone Box
 Telephone Manhole
 Traffic Signal Box
 Traffic Signal Pole
 Water Meter
 Water Valve
 Wood Utility Pole
 Wood Utility Pole w/Light
 Underground Drainage
 Underground Sanitary Sewer
 Underground Water
 State Plane Coordinates

N 690997.46
E 953047.78



N.W. CORNER OF THE S.W.
1/4 OF SECTION 31-48-43
FD. NAIL & DISC LB8860,
AS PER CCR 101362
N 690997.46
E 953047.78

S.W. CORNER OF THE S.E.
1/4 OF SECTION 36-48-42
N 690900.415
E 947746.61

S.E. CORNER OF THE S.W.
1/4 OF SECTION 31-48-43
FD. NAIL & DISC LB8860,
AS PER CCR 101362
N 690997.46
E 953047.78

Donald L. Cooper
Digitally signed by Donald L. Cooper
DN: c=US, o=SUN-TECH ENGINEERING INC,
ou=A01410D00000171EA2B4317
0000BAA9, cn=Donald L. Cooper
Date: 2020.07.14 15:01:05 -04'00'
Adobe Acrobat version: 11.0.23

EAST ATLANTIC BOULEVARD / STATE ROAD 814
100' R/W - (F.D.O.T. R/W MAP SECTION 86130-2501, SHEET 1 OF 1, LAST REVISION DATE 6-16-16 & R/W MAP 15, PG. 57)
(OCEAN BOULEVARD) 100' R/W - (P.B. 5, PG. 13 -B.C.R.)

P&Z
PZ20-16500002
12/16/2020

ALTA/NSPS LAND TITLE SURVEY
GROVER CORLEW OF FLORIDA, LLC
A PORTION OF BLOCK 16 AND BLOCK 17
PINEHURST, (PLAT BOOK 5, PAGE 13, BROWARD COUNTY RECORDS)
CITY OF POMPANO BEACH, BROWARD COUNTY, FLORIDA

DRAWN BY:
VALENTINE
JOB NUMBER
19-3981
SCALE
1" = 30'
SHEET No.
OF 52

STE Sun-Tech Engineering, Inc.
Engineers - Planners - Surveyors
4577 Nob Hill Road, Suite 102
Sunrise, FL 33351
www.suntecheng.com
Certificate of Auth. #7097LB 7019
Phone (954) 777-3123
Fax (954) 777-3114